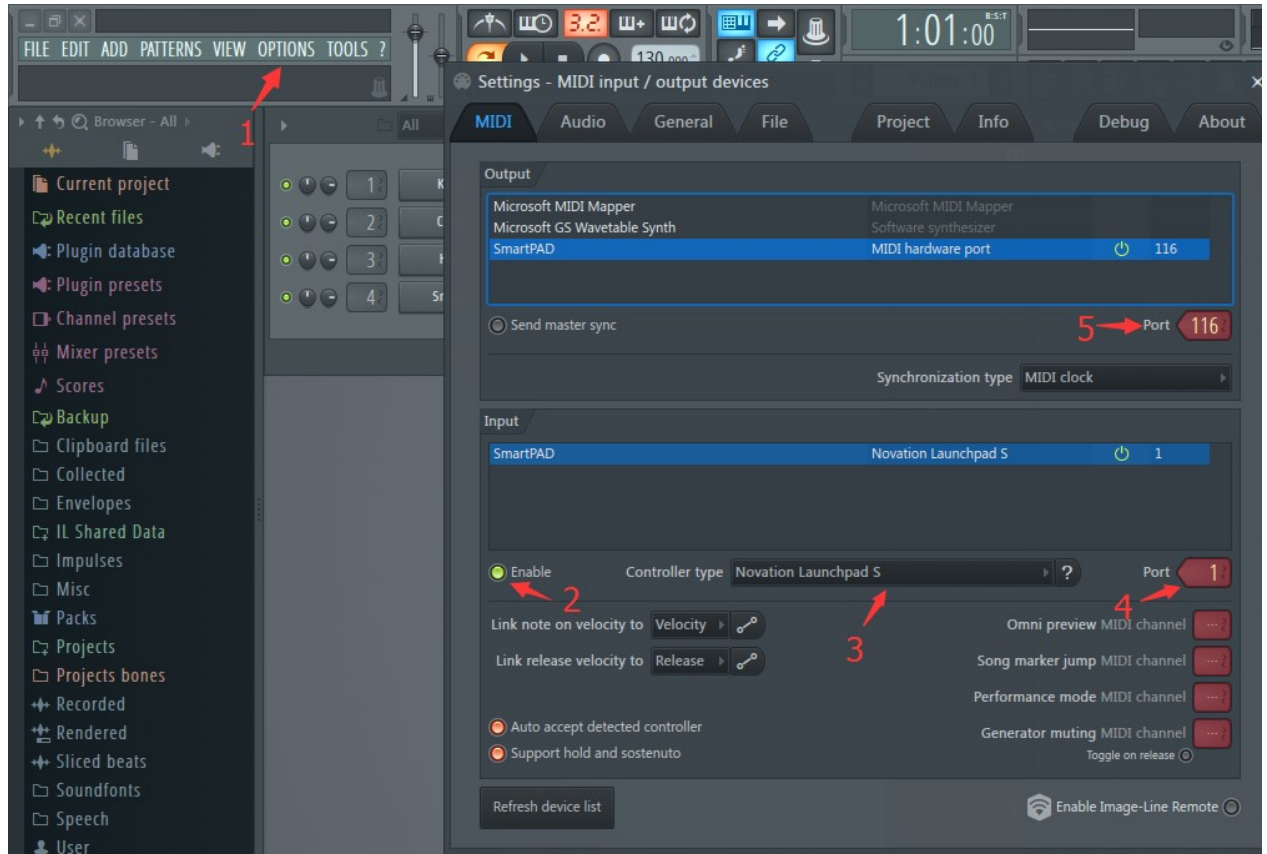


How to use SmartPad in FL-studio 20170722

SmartPAD connect to computer and open FL- studio.

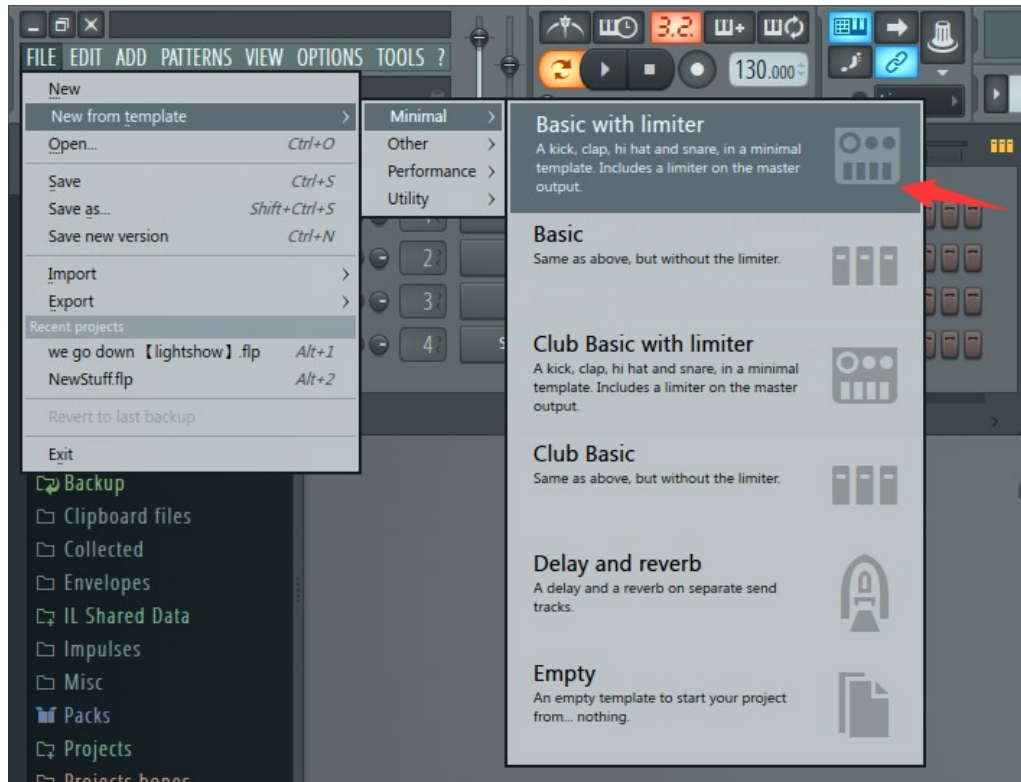
Step1:



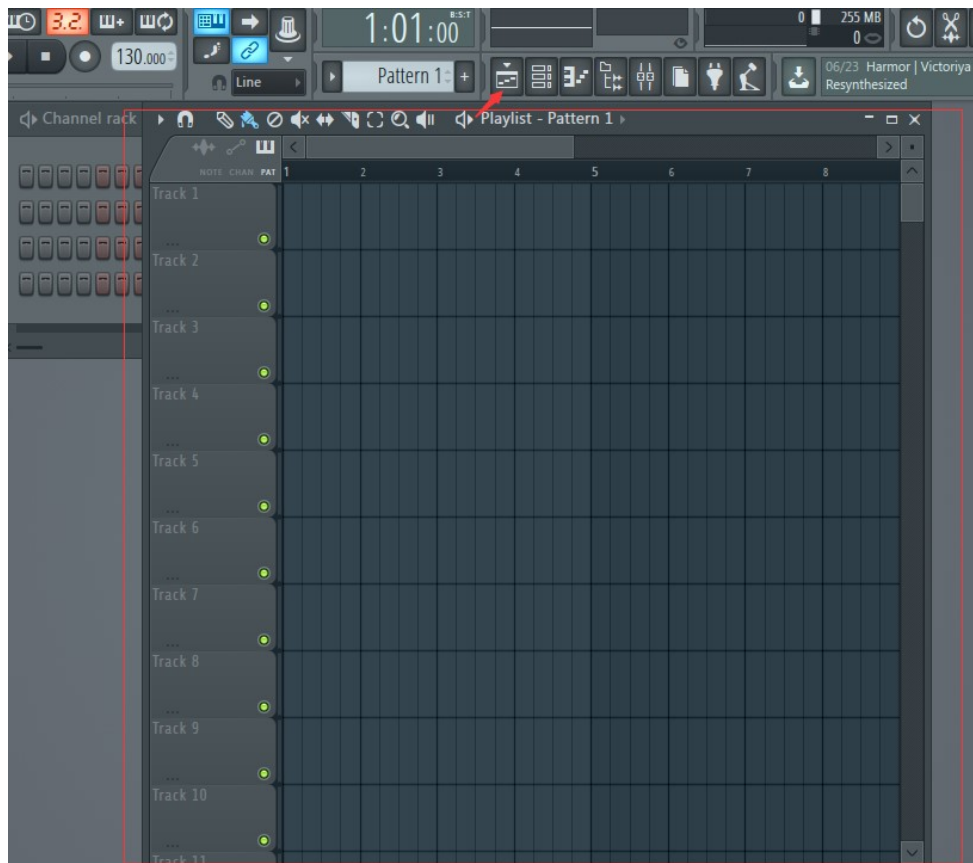
1. Click on "OPTIONS" -> "MIDI settings".
2. Enable.
3. Select "Novation Launchpad S".
4. Port "1".
5. Port "116".

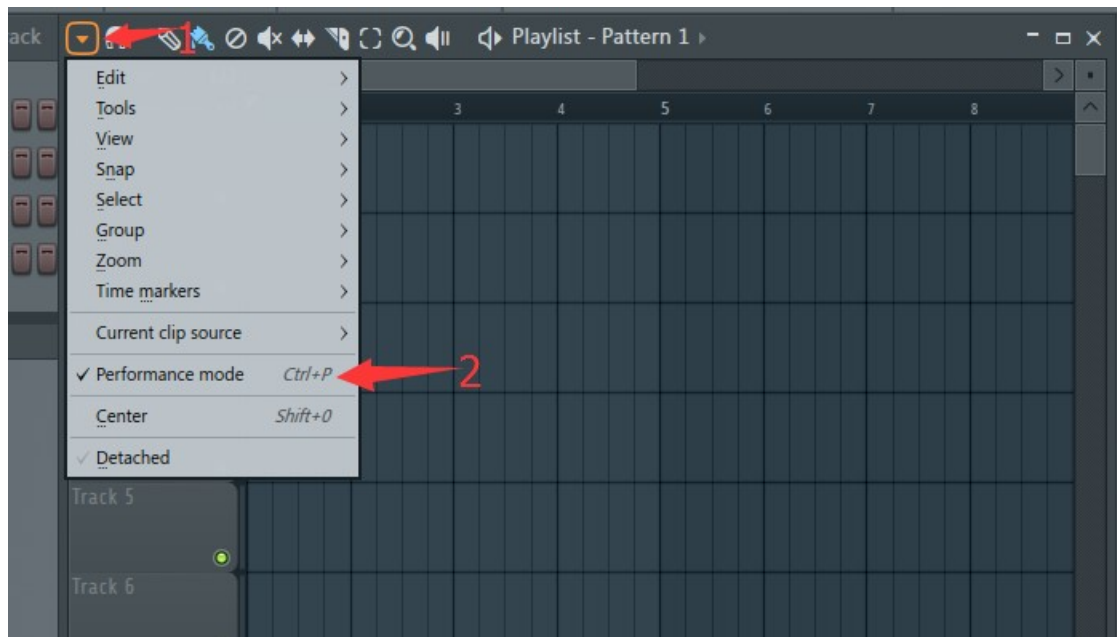
Step2:

1. New Project.



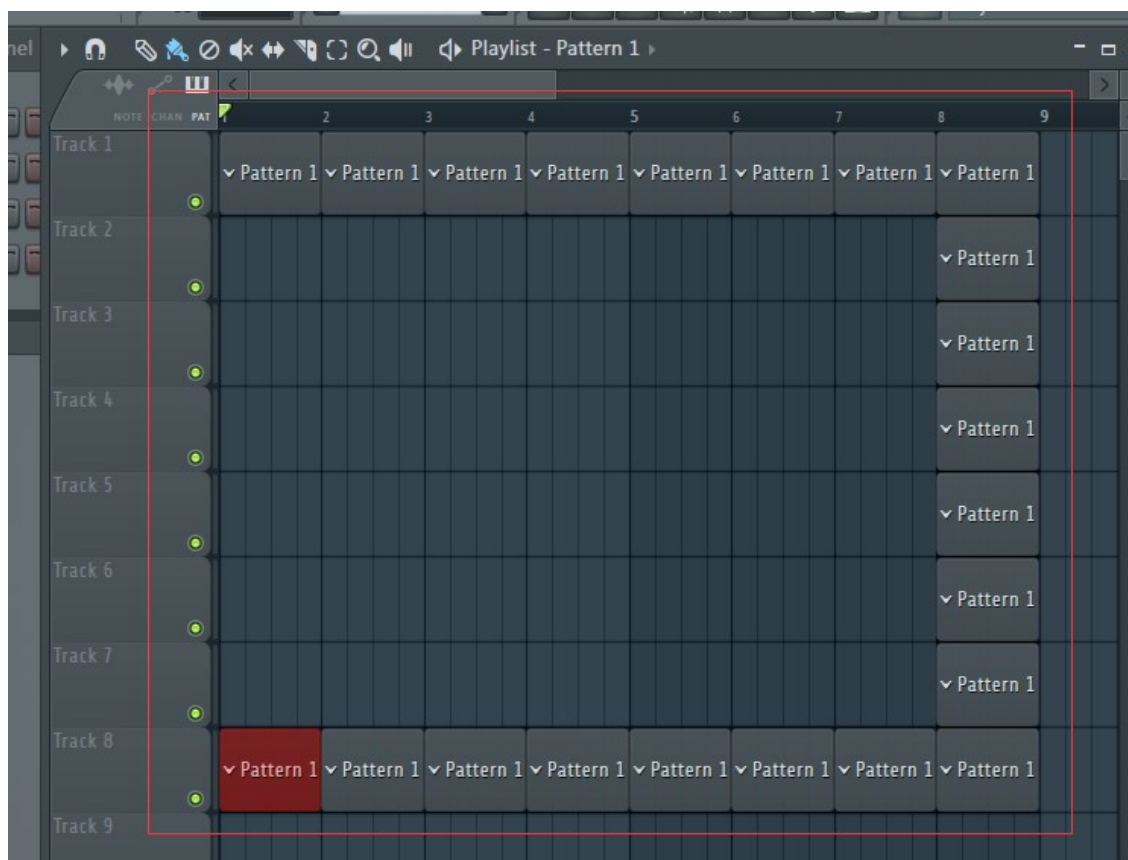
2. Click on here open the "Track" windows





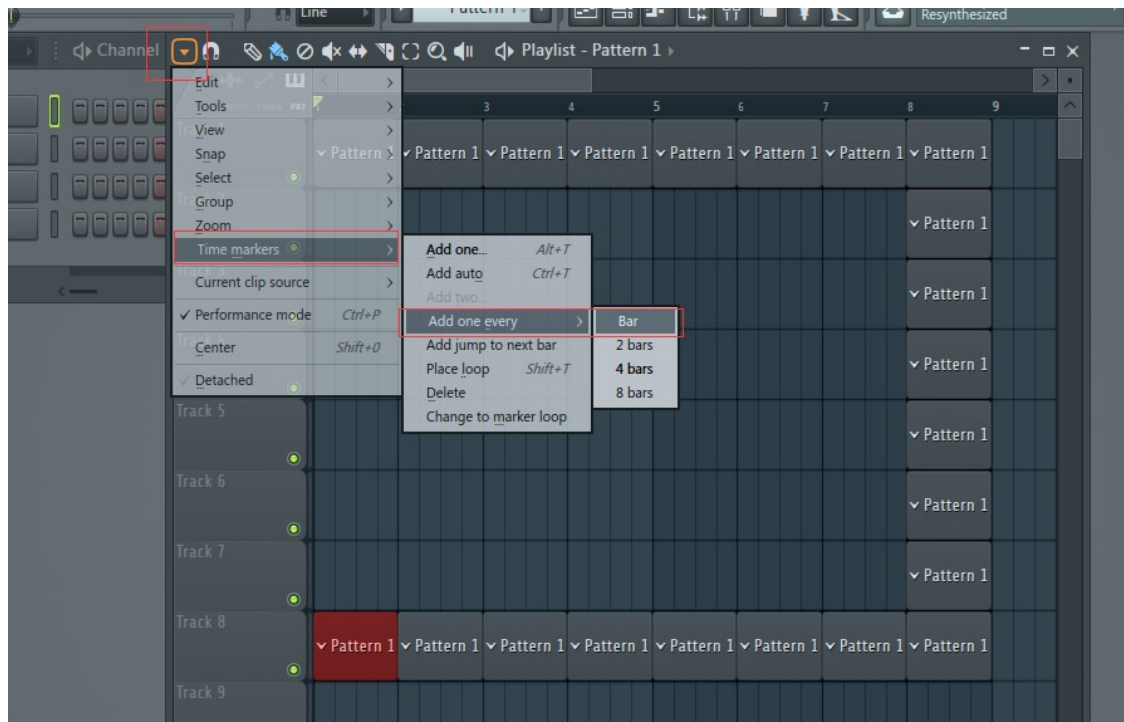
1. Click on here and open the windows.
2. Enable "Performance mode"

Step3:



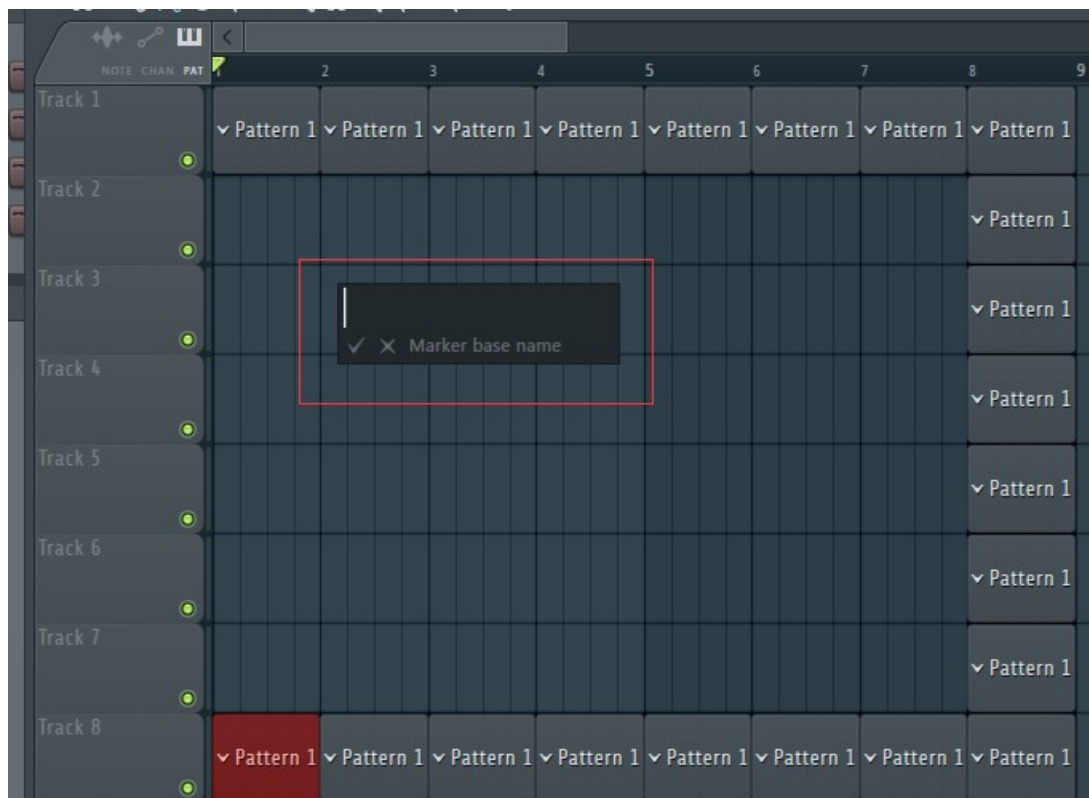
Add to patterns.(Almost 8x8 pattern).

Step4:



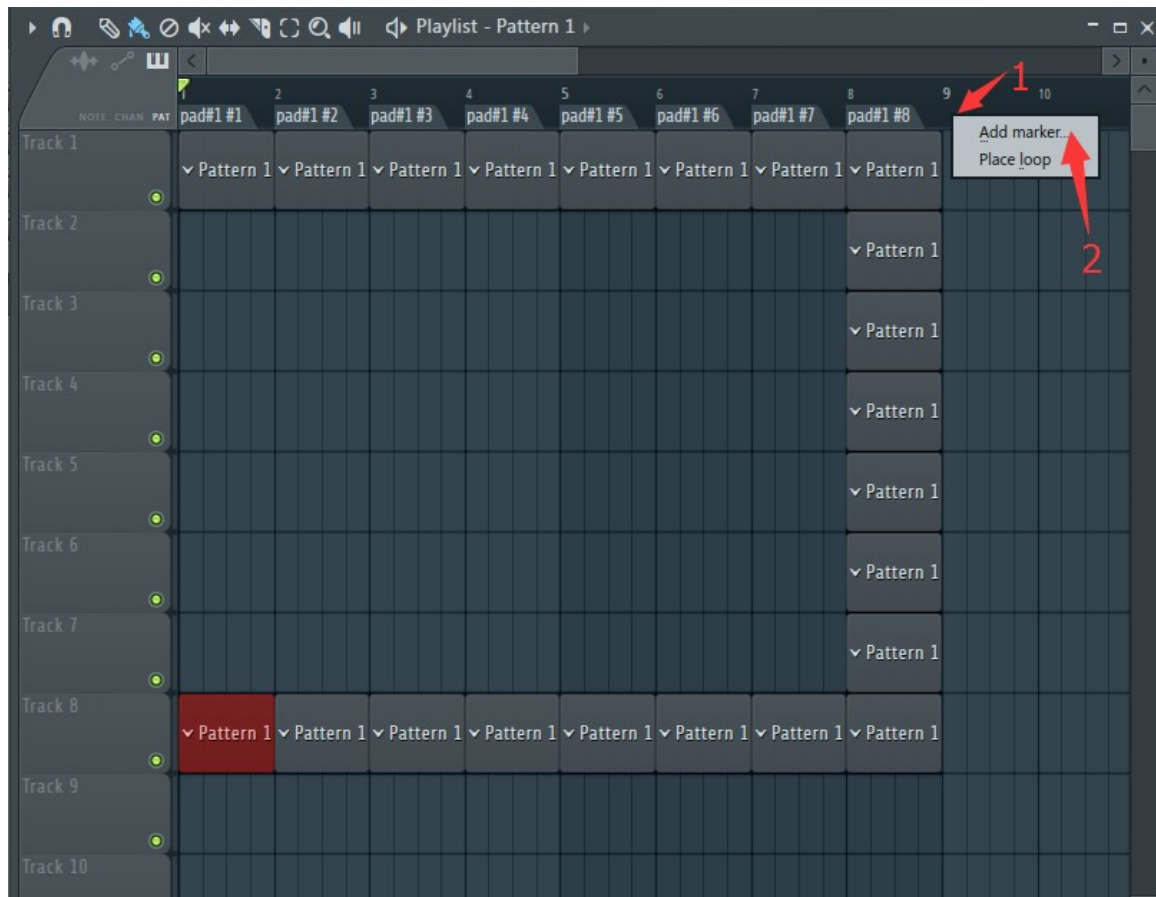
Add to time mark.

Step5:

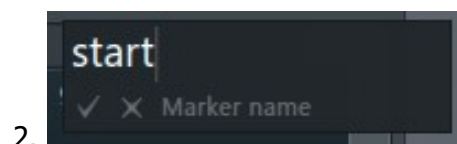


Names of each bar. For example: "pad#1"

Step6:

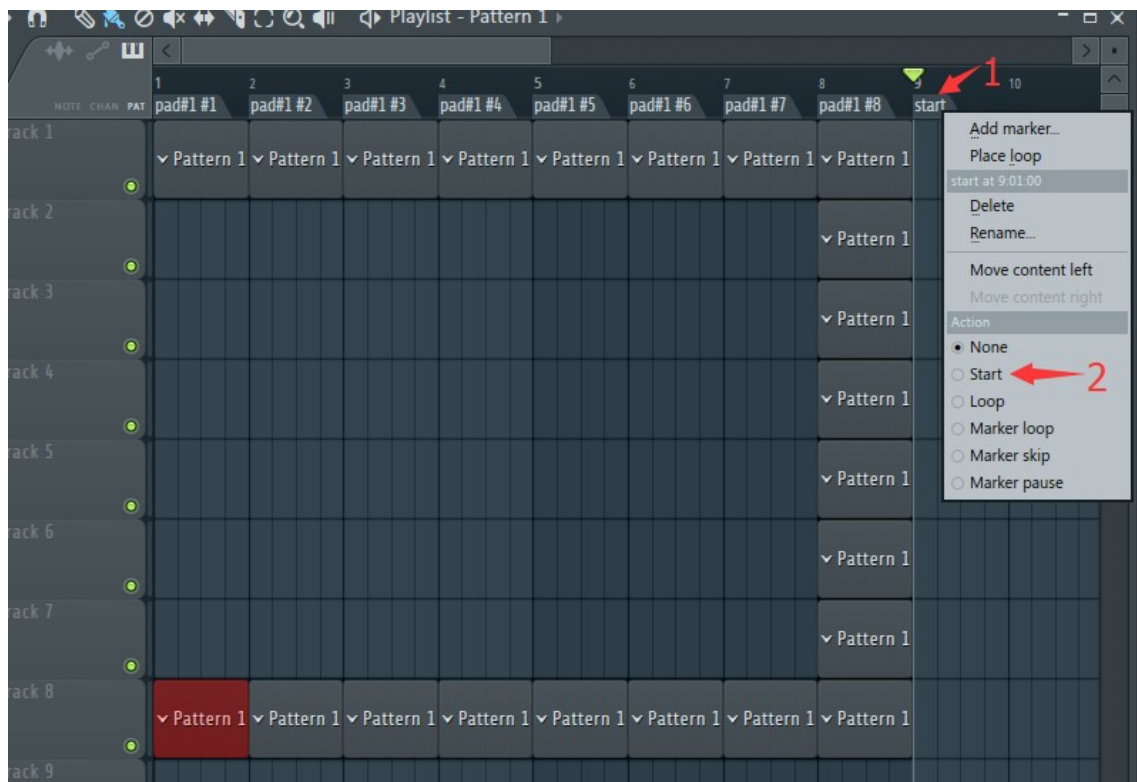


1. Right-click on here , Select "Add marker..."



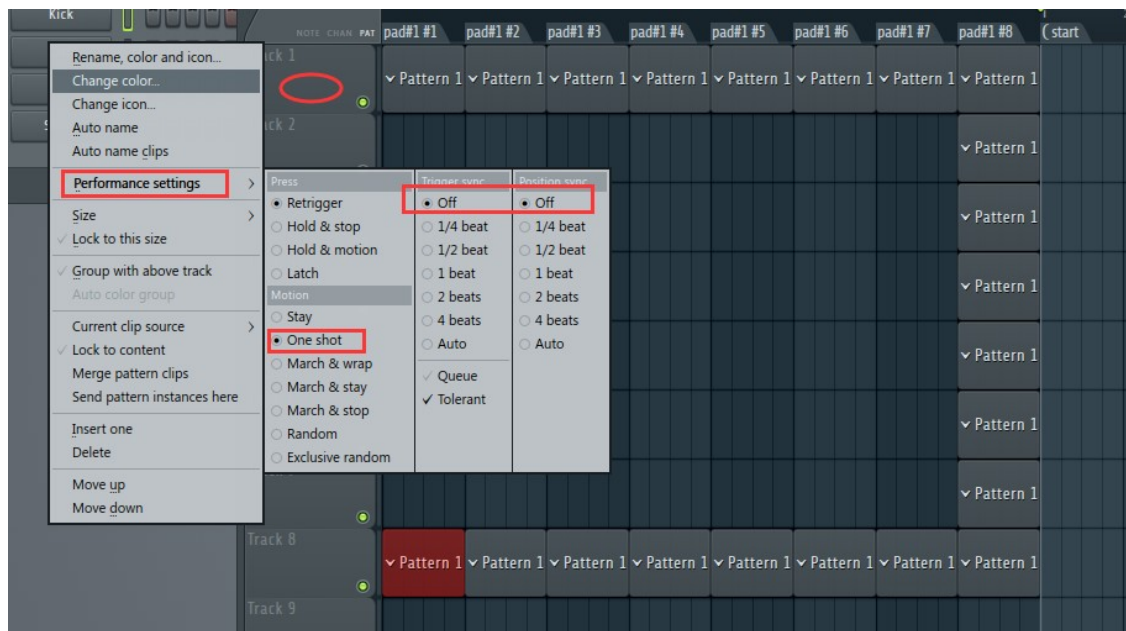
2. Marker name is "start".

Step7:



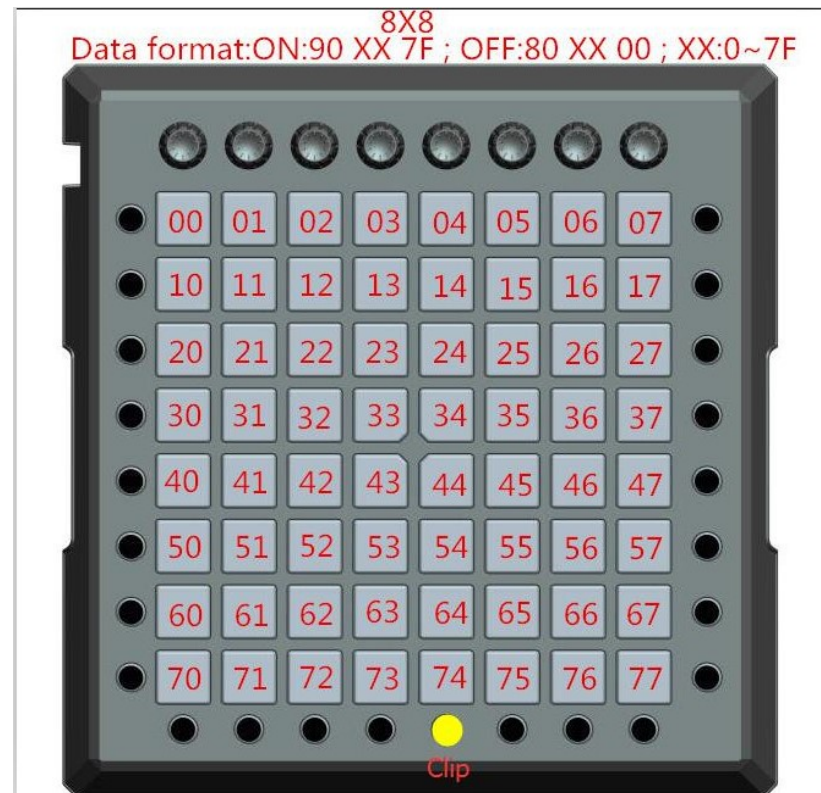
1. Right-click on the mark.

2. Select "start".



Right-click on each "Track" .(Track1~8). Configure as shown.

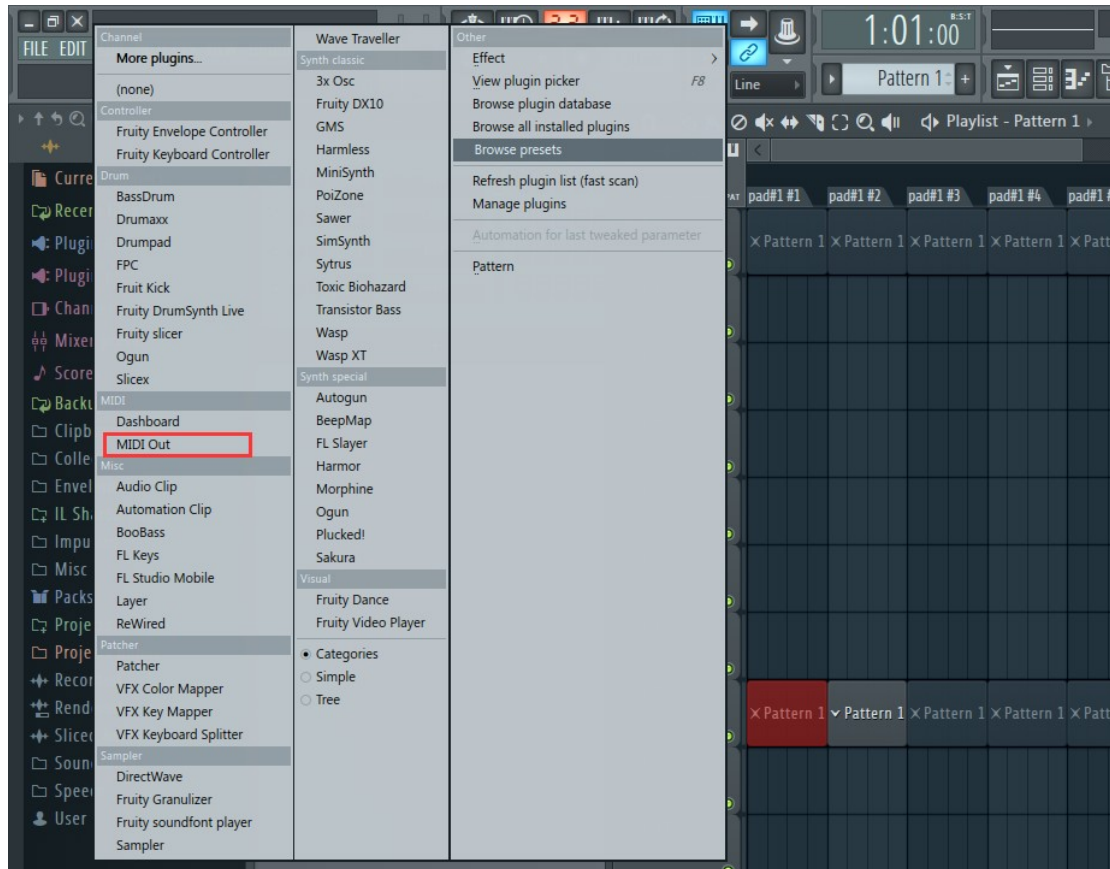
The SmartPad 8x8 Pads(in **Clip** mode) correspond to FL-studio.



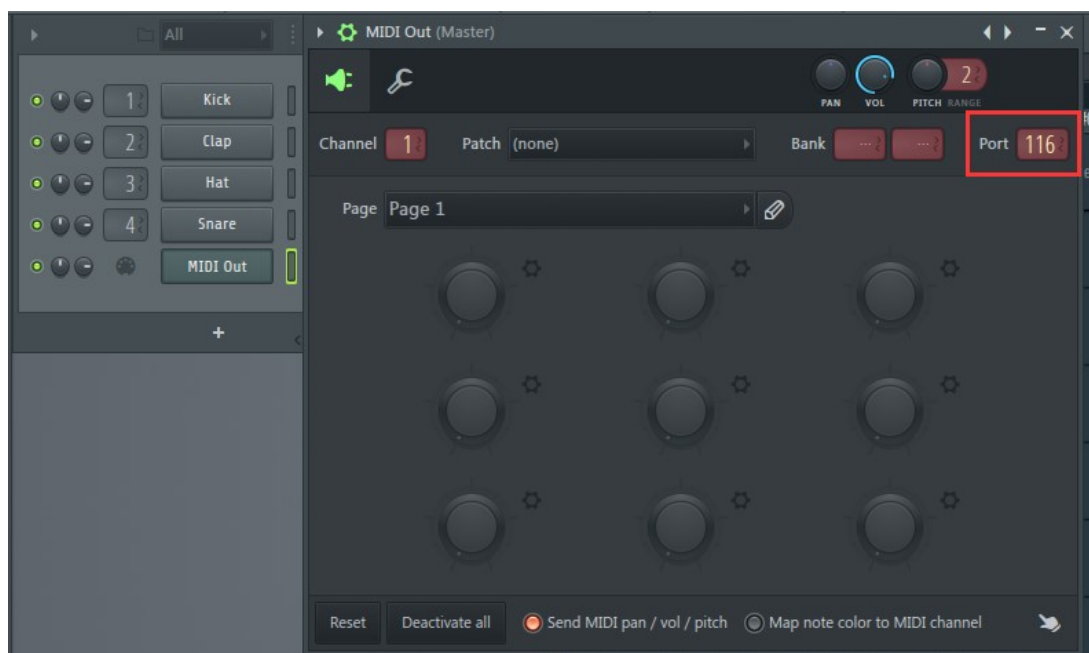
NOTE CHAN PAT	pad#1 #1	pad#1 #2	pad#1 #3	pad#1 #4	pad#1 #5	pad#1 #6	pad#1 #7	pad#1 #8	(start
Track 1	00	01	02	03	04	05	06	07	
Track 2	10	11	12	13	14	15	16	17	
Track 3	20	21	22	23	24	25	26	27	
Track 4	30	31	32	33	34	35	36	37	
Track 5	40	41	42	43	44	45	46	47	
Track 6	50	51	52	53	54	55	56	57	
Track 7	60	61	62	63	64	65	66	67	
Track 8	70	71	72	73	74	75	76	77	

Step8:

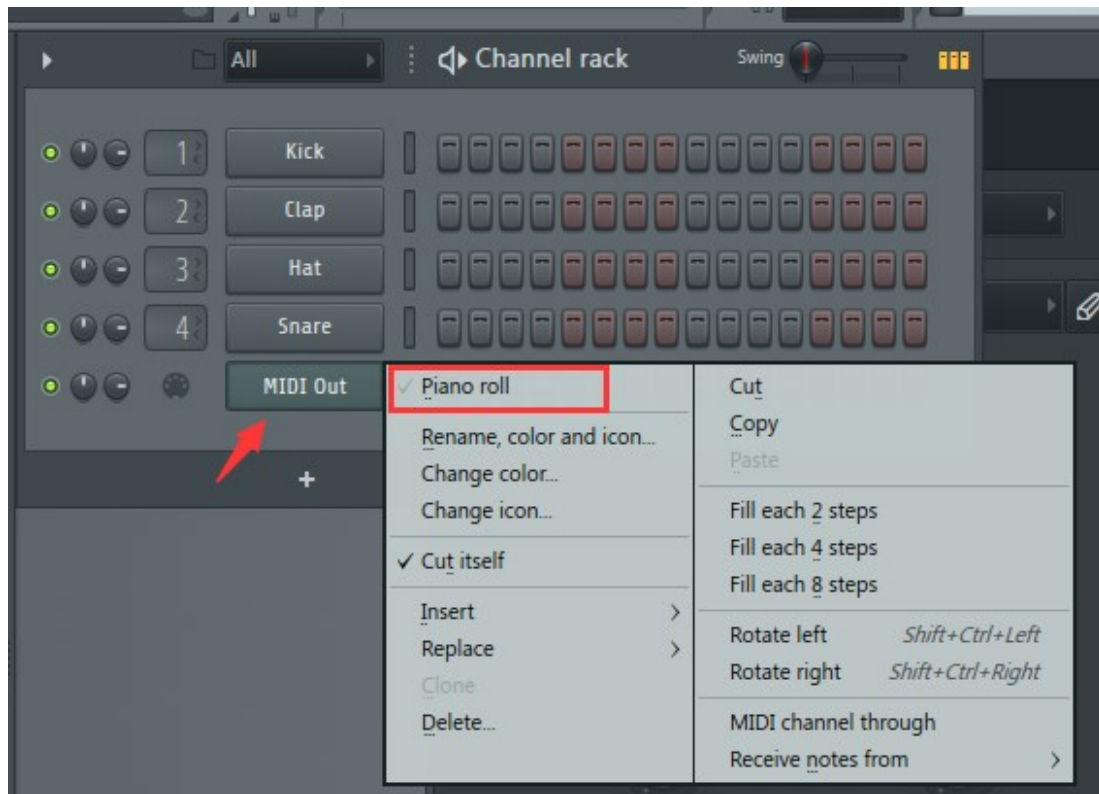
Light show mode



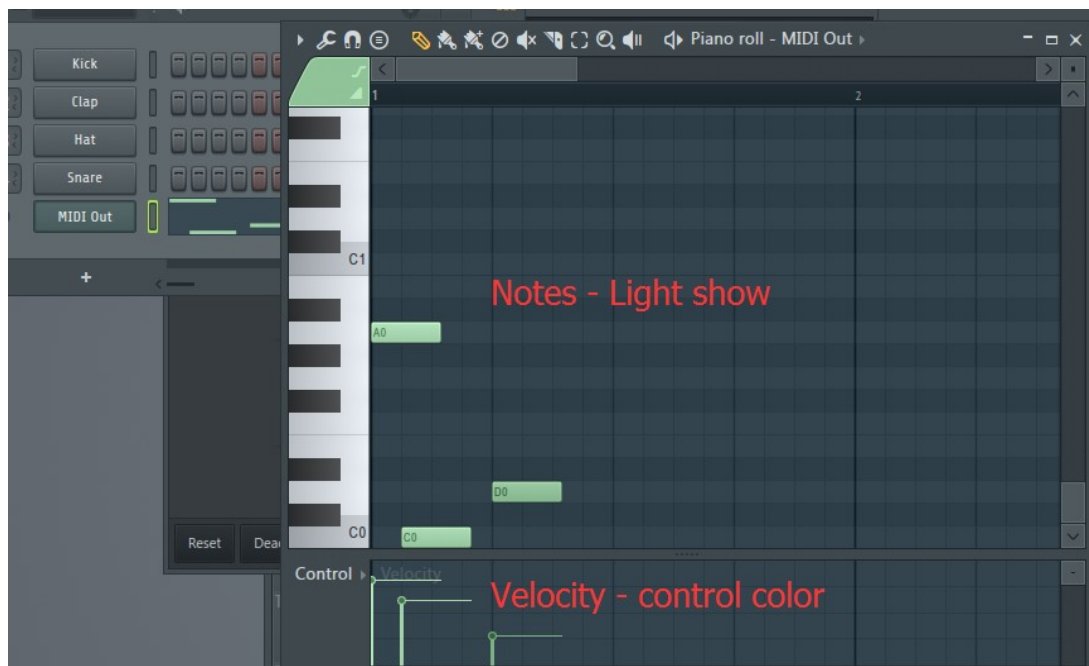
Add a "MIDI Out" channel by selecting "MIDI out" on the Channel / "ADD" menu option.



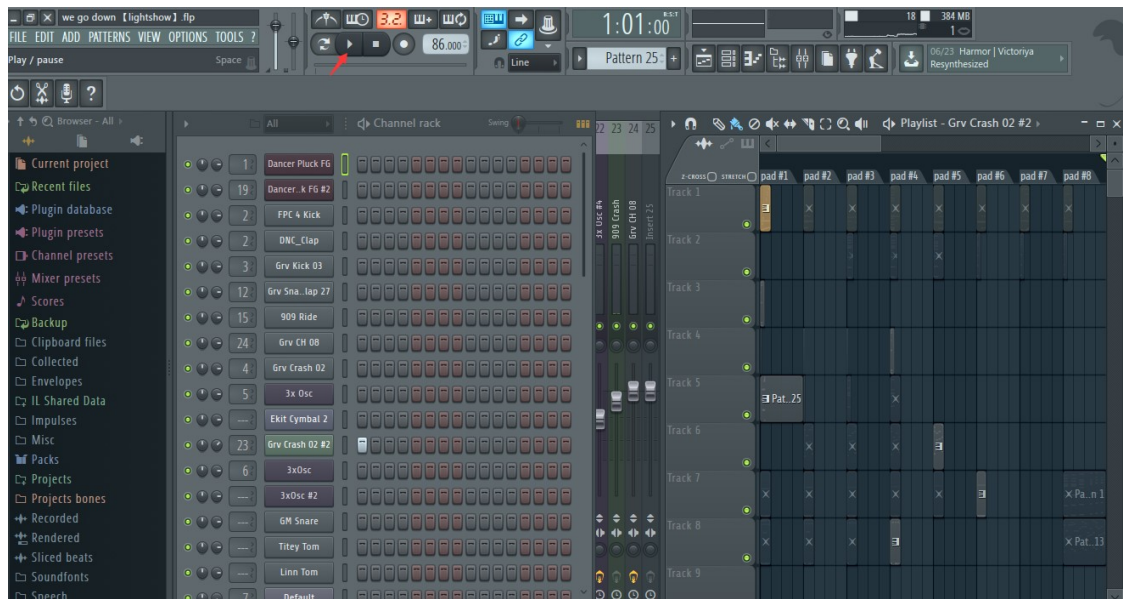
Configure the port of this new midi out channel to 116.



Right-click on "MIDI out" .Select "Piano roll".



Use the piano roll to send notes to light buttons on your SmartPad. To change colors, change the velocity (as on Live or any other DAW or software).



Now you can have a nice light show when playing your track smile.